

**KD-Validated Anti-Integrin alpha 5 Rabbit Monoclonal Antibody**  
**Rabbit monoclonal antibody**  
**Catalog # AGI2392****Specification****KD-Validated Anti-Integrin alpha 5 Rabbit Monoclonal Antibody - Product Information**

|                   |  |
|-------------------|--|
| Application       | WB, FC, ICC  |
| Primary Accession | <a href="#">P08648</a>   |
| Reactivity        | Rat, Human, Mouse  |
| Clonality         | Monoclonal   |
| Isotype           | Rabbit IgG   |
| Calculated MW     | Predicted, 115 kDa ; Observed, 150 kDa   |
| Gene Name         | KDa  |
| Aliases           | ITGA5<br>CD49e; FNRA; Integrin, Alpha 5<br>(Fibronectin Receptor, Alpha Polypeptide);<br>Fibronectin Receptor, Alpha Polypeptide;<br>Fibronectin Receptor Subunit Alpha; CD49<br>Antigen-Like Family Member E; Integrin<br>Alpha-5; Integrin Alpha-F; VLA-5; Very Late<br>Activation Protein 5, Alpha Subunit;<br>Fibronectin Receptor, Alpha Subunit;<br>ITGA5/SLC9B1 Fusion; CD49e Antigen;<br>VLA5A |
| Immunogen         | A synthesized peptide derived from human<br>integrin alpha 5   |

**KD-Validated Anti-Integrin alpha 5 Rabbit Monoclonal Antibody - Additional Information**

|             |  |
|-------------|--|
| Gene ID     | 3678   |
| Other Names | Integrin alpha-5, CD49 antigen-like family member E, Fibronectin receptor subunit alpha, Integrin alpha-F, VLA-5, CD49e, Integrin alpha-5 heavy chain, Integrin alpha-5 light chain, ITGA5 ( <a href="http://www.genenames.org/cgi-bin/gene_symbol_report?hgnc_id=6141" target="_blank">http://www.genenames.org/cgi-bin/gene_symbol_report?hgnc_id=6141</a> ), FNRA |

**KD-Validated Anti-Integrin alpha 5 Rabbit Monoclonal Antibody - Protein Information****Name** ITGA5 ([HGNC:6141](#))**Synonyms** FNRA**Function**

Integrin alpha-5/beta-1 (ITGA5:ITGB1) is a receptor for fibronectin and fibrinogen. It recognizes the sequence R-G-D in its ligands. ITGA5:ITGB1 binds to PLA2G2A via a site (site 2) which is distinct from the classical ligand-binding site (site 1) and this induces integrin conformational changes and enhanced ligand binding to site 1 (PubMed:[18635536](http://www.uniprot.org/citations/18635536)), PubMed:[25398877](http://www.uniprot.org/citations/25398877))

target="\_blank">25398877</a>). ITGA5:ITGB1 acts as a receptor for fibrillin-1 (FBN1) and mediates R-G-D-dependent cell adhesion to FBN1 (PubMed:<a href="http://www.uniprot.org/citations/12807887" target="\_blank">12807887</a>, PubMed:<a href="http://www.uniprot.org/citations/17158881" target="\_blank">17158881</a>). ITGA5:ITGB1 acts as a receptor for fibronectin (FN1) and mediates R-G-D-dependent cell adhesion to FN1 (PubMed:<a href="http://www.uniprot.org/citations/33962943" target="\_blank">33962943</a>). ITGA5:ITGB1 is a receptor for IL1B and binding is essential for IL1B signaling (PubMed:<a href="http://www.uniprot.org/citations/29030430" target="\_blank">29030430</a>). ITGA5:ITGB3 is a receptor for soluble CD40LG and is required for CD40/CD40LG signaling (PubMed:<a href="http://www.uniprot.org/citations/31331973" target="\_blank">31331973</a>).

### Cellular Location

Cell membrane; Single-pass type I membrane protein. Cell junction, focal adhesion

### Tissue Location

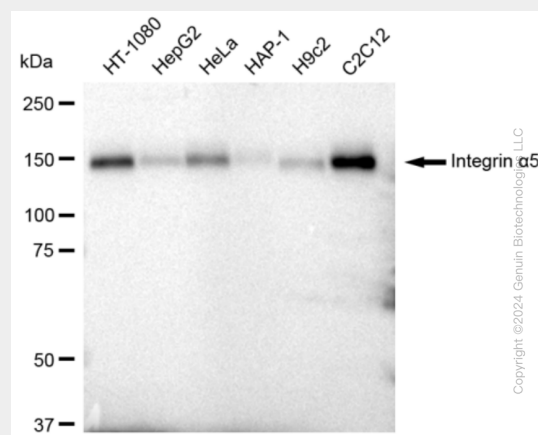
Expressed in placenta (at protein level).

## KD-Validated Anti-Integrin alpha 5 Rabbit Monoclonal Antibody - Protocols

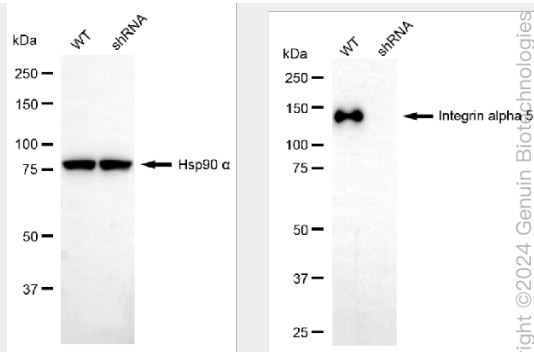
Provided below are standard protocols that you may find useful for product applications.

- [Western Blot](#)
- [Blocking Peptides](#)
- [Dot Blot](#)
- [Immunohistochemistry](#)
- [Immunofluorescence](#)
- [Immunoprecipitation](#)
- [Flow Cytometry](#)
- [Cell Culture](#)

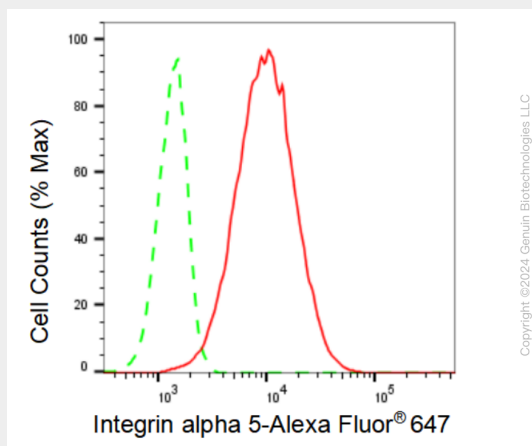
## KD-Validated Anti-Integrin alpha 5 Rabbit Monoclonal Antibody - Images



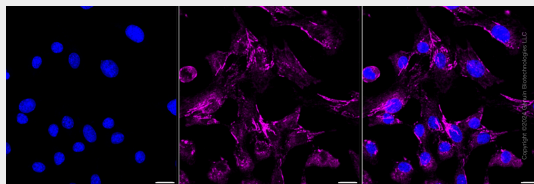
Western blotting analysis using anti-Integrin α5 antibody (Cat#AGI2392). Total cell lysates (30 µg) from various cell lines were loaded and separated by SDS-PAGE. The blot was incubated with anti-Integrin α5 antibody (Cat#AGI2392, 1:5,000) and HRP-conjugated goat anti rabbit secondary antibody respectively.



Western blotting analysis using anti-Integrin alpha 5 antibody (Cat#AGI2392). Integrin alpha 5 expression in wild type (WT) and Integrin alpha 5 shRNA knockdown (KD) HeLa cells with 30 µg of total cell lysates. β-Tubulin serves as a loading control. The blot was incubated with anti-Integrin alpha 5 antibody (Cat#AGI2392, 1:5,000) and HRP-conjugated goat anti rabbit secondary antibody respectively.



Flow cytometric analysis of Integrin alpha 5 expression in C2C12 cells using Integrin alpha 5 antibody (Cat#AGI2392, 1:2,000). Green, isotype control; red, Integrin alpha 5.



Immunocytochemical staining of C2C12 cells with Integrin alpha 5 antibody (Cat#AGI2392, 1:1,000). Nuclei were stained blue with DAPI; Integrin alpha 5 was stained magenta with Alexa Fluor® 647. Images were taken using Leica stellaris 5. Protein abundance based on laser Intensity and smart gain: Medium. Scale bar: 20 µm.